

community

discipleship

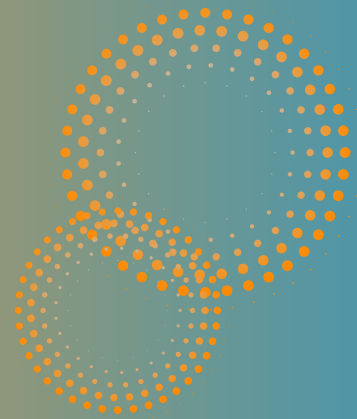
faith

relationship

growing

STUDY WITH FRIENDS FY2024

ANNUAL REPORT



FRIENDS
STUDYING
THE BIBLE
TOGETHER

WELCOME, AND THANK YOU!



Holly Lazzaro

Founder,
Study With Friends

Welcome to the 2024 Annual Report of Study With Friends!

As we mark a decade in ministry, we've taken time to reflect on our journey and look ahead to the future. In 2014, podcasting was still a budding concept for many ministries, but we felt called to step into the digital mission field early. Today, we continue to serve as a beacon for Christ in the digital world. Following the popularity and reach of different media, we have shifted from a strong radio presence toward more digital outlets. God has faithfully kept us focused on this transition, guiding us with clarity, humility, and fruitfulness.

Our regional women's retreats (launched in 2023) grew significantly in 2024, with over 100 women participating in retreats hosted by or affiliated with Study With Friends. Thanks to the generosity of our donors and grant supporters, we have offered these retreats to women in need, making them more accessible than ever.

We celebrate the harmony between our digital and in-person ministries. We remain inclusive, gathering women from diverse backgrounds, ethnicities, and spiritual journeys to sit together at Christ's feet. The on-demand nature of our digital content perfectly complements the discipleship we foster in person at retreats, creating a seamless integration of growth and connection. We stand in awe of the incredible tapestry God has woven through Study With Friends for His glory and our good.

Mission

At Study With Friends, we help individuals and groups to grow in relationship with Jesus Christ through the fellowship of Bible study and the careful examination of their faith.

Our view of discipleship is

biblical and holistic. It is:

-sacrificial (Matthew 16:24)

-faithful in adherence

(John 8:31)

-known by love (John 13:34-35)

-selfless (Philippians 2:3-4)

-fruitful (John 15:8)

-holistic to mind, body, and spirit (Romans 12:1-2)

-united with Christ

(Galatians 2:20)

-teaching/learning

(2 Timothy 2:2)

-and multiplying

(Matthew 28:19-20).

Vision

We envision a church where all Christians become true disciples with minds, hearts, and lives transformed into the image of our Savior, Jesus Christ.

2024: DIGITAL MINISTRY

53,241

followers/subscribers across all digital channels



10-12k
average episode views

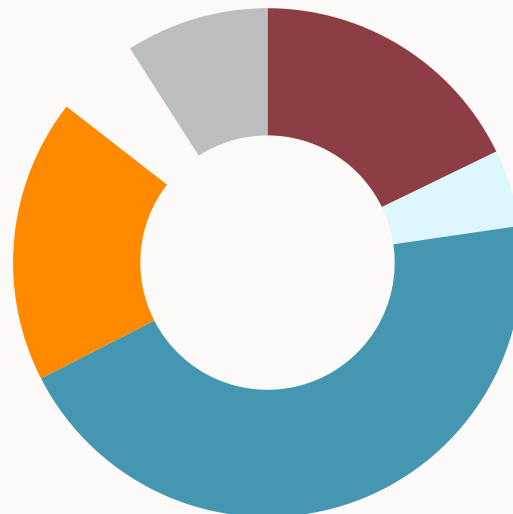


Volunteers

- 10 Bloggers
- 17 Episode Guests
- 5 Retreat Team
- 5 Leadership Team

REACHING THE DIGITAL MISSION FIELD:

Engaging people with the truth of the gospel



Channels

- 9,478 YouTube
- 2,600 FaceBook
- 23,822 Instagram
- 9,600 X
- 2,872 Threads
- 4,834 Email



EQUIPPING DISCIPLES

...With Our Digital Content

"I've watched all of your videos! I have really enjoyed the Sermon on the Mount series. I would make a comment on every video; however, I'm usually so furiously writing notes on each video, that I forget to leave a comment! I have learned so much! Thank you for all the work you've put into this.

- @margie7399 (YouTube Subscriber)

...With Our In-Person Retreats

"I loved connecting with other churches' women and loved what the speaker brought. She was articulate and kept the conversation moving organically. The information and schedule were easy to follow."

"It was relaxed, and the speaker was totally engaging but also invited some participation."

"Relevant topic, sound biblical teaching. I am eager to dig into the study book!"

-Retreat Survey Responses



"I understand the Bible better because of Study With Friends."

-Michelle Grant, email subscriber

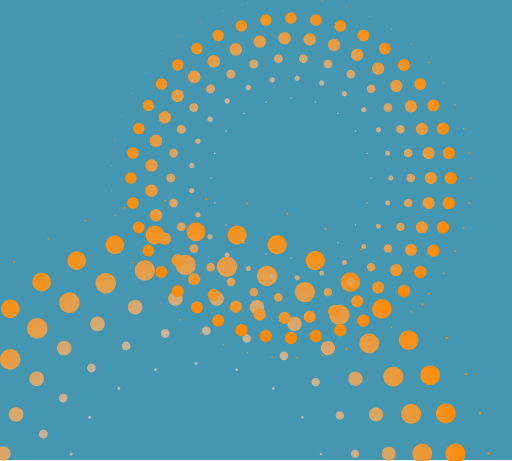
...With The Book: The Sermon on the Mount

"The subtitle of this work is "a practical study," and it is indeed practical. One of the problems with many modern studies of Jesus' sermon is that it has been defanged. That is, many of the commands that Jesus gives are seen to be "not applicable for today." Lazzaro does not fall into this trap and offers careful and well-thought-out lessons on the sermon with helpful background questions and interesting insights into the time of Jesus...If you are looking for a devotional guide to help work through the sermon without a lot of clutter, this is recommended."

-Dr. Sam Lamerson, Distinguished Professor of Biblical Studies, Knox Theological Seminary



DIGITAL MISSION AND MINISTRY



At Study With Friends, we believe it is imperative that Christians actively produce digital content that reflects biblical truth, offers hope, and brings light to a darkened world. The messages we share in the digital space have the potential to shape hearts, challenge minds, and lead people to Christ in ways traditional media could never match. As more and more individuals turn to their devices for answers, the Church must be present with content that upholds the gospel and speaks to the deepest needs of the human soul. *The digital world is a mission field.*

Producing digital content is not just a strategic move—it's a biblical imperative. In his letters, the apostle Paul demonstrated a keen awareness of the cultural platforms of his time, meeting people where they were to spread the message of Christ. In the same way, we are called to take the gospel to the digital marketplace of ideas, offering a counter-narrative rooted in truth, grace, and love. If we fail to engage in this space, we risk allowing the dominant cultural narratives to shape the worldview of future generations.

Now, more than ever, it is crucial for Christians to be intentional and proactive in producing compelling, biblically grounded content that competes with and counters the harmful messages saturating digital platforms. Doing so can transform the digital world into a space where truth reigns and lives are changed. The need for this ministry is urgent, and the impact is eternal.

ONE-DAY WOMEN'S RETREATS



Our One-Day Women's Retreats offer a sacred space to step away from the noise and find restoration for the body, mind, and soul. These retreats are more than just a break; they are intentional times of renewal where women can deepen their relationship with God, reflect on His Word, and be refreshed by the Holy Spirit. In the stillness of these moments, the burdens of life are lifted, and we rediscover the importance of abiding in Christ.

But it's not just about individual renewal—it's also about fellowship. These retreats create a unique environment where women from all walks of life come together in unity, sharing their stories, supporting one another, and encouraging each other in their faith journeys. The body of Christ is meant to grow and thrive together, and there is no substitute for the powerful fellowship that occurs when women gather in worship and community.

In a world that constantly pushes us to be busy and distracted, taking intentional time to retreat is a life-changing practice. It restores our souls, strengthens our faith, and helps us return to the demands of life with a renewed sense of purpose and a deeper connection to God. Regular retreats are not just a luxury—they are a necessity for spiritual health and vitality. Through these One-Day Women's Retreats, we provide an opportunity for women to slow down, reflect, and experience the transforming power of God's presence.



FINANCIALS

Assets	2023	2024
Cash and Cash Equivalents	\$20,543	\$15,450
Total Assets	\$20,543	\$15,450

Liabilities and Net Assets	2023	2024
Accounts Payable	\$0	\$0
Accrued Expenses	\$0	\$0
Deferred Revenue	\$0	\$0
Total Liabilities	\$0	\$0

Revenue	2023	2024
Grants	\$1,593	\$1,835
Individual Contributions	\$12,062	\$15,978
Corporate Sponsorship	\$2,200	\$2,400
Church Contributions	\$1,000	\$1,000
Miscellaneous Income	\$1,829	\$272
Total Revenue	\$18,684	\$21,485

Expenses	2023	2024
Program Services	\$26,975	\$21,657
Administrative	\$1,746	\$733
Fundraising	\$578	\$1,284
Total Expenses	\$29,299	\$23,674



WHAT'S NEXT?

Expand Our Digital Outreach

We will increase engagement and reach for our digital ministries across all channels to foster a more engaging and dynamic digital presence, encouraging deeper participation and connection within our community.

- Polls and Surveys
- Live Q&A Sessions
- Discussion Prompts
- Challenges and Contests
- User-Generated Content
- Prayer Requests and Praise Reports

Strengthen Partnerships

Churches

We will continue to establish partnerships with local churches for retreats/events and encourage the formation of in-person Bible study groups that utilize Study With Friends resources. 71 New church partners have already been identified!

- Develop a Clear Value Proposition
- Create a Partnership Plan
- Conduct Meetings and Presentations
- Offer Tailored Solutions
- Provide Training and Support
- Collaborate on Events
- Measure and Showcase Impact

Other Christian Organizations

Collaborating with other Christian organizations can help us co-host events and cross-promote content, extending our gospel reach and impact.

- Identify Compatible Organizations
- Define Mutual Goals
- Establish Clear Communication Channels
- Leverage Each Other's Strengths
- Collaborate on Projects and Events
- Monitor and Evaluate
- Celebrate Successes



THANK YOU TO OUR SUPPORTERS



\$2,000+

Greg Lazzaro
GoToCollegeFairs, LLC
EPC Presbytery of the East
Telos Foundation

\$1,000-1,999

Beth Delarato
Cindy Doron
Marilyn Franzl
Amy Fleming
Carol Sullivan
Langhorne Presbyterian
Church

\$500-999

Brian Hasenkamp

\$1-499

Andrea Brown
Marge Chapparo
Romy Dale
Caroline Flynn
Michael Mariakis
Holly Lazzaro
James Bernacki
Carol Casten
Carol Kumer
Dale New
Frank Motovidlak
Doris Lynn

In-Kind

Wilkins Radio Network



THANK YOU TO OUR 2024 VOLUNTEERS AND STAFF

We couldn't do this work without you

Episode Guests

Marilyn Franzi	Cheryll Black
Jan Cothran	Ryann Posner
Fateema Nelson	Jodi Bennett
Angelina Prince	Eva Jennings
Gianna Lazzaro	Cheryll Black
Renu Prince	Ryann Posner
Kathy Carter	Carol Sullivan
Caitlin Bennett	Isabella Hanratty
Sofia Lazzaro	Brooke Tweedell
Jodi Bennett	Wendy McMenamin
Eva Jennings	

Board Members

Marilyn Franzi
Caroline Flynn
Amy Lynn
Carol Sullivan
Holly Lazzaro

Production Team

Greg Lazzaro
Paige Quadro
Holly Grant

Blog Contributors

Alysa DiVirgilio
Julia Baer
Jessica Lammie
Christine Wood
Carol Clark
Holly Lazzaro
Isabella Hanratty
Marilyn Franzi
Kathy Carter
Terry Sochacki

THANK YOU

LOCAL CHURCH PARTNERSHIPS

Argyle Presbyterian Church
 Ashland Evangelical Presbyterian Church
 Bellevue Presbyterian Church
 Bethany Evangelical Presbyterian Church
 Bethlehem Steltz Reformed Church
 Brick Church Fellowship
 Central Presbyterian Church
 Christ Community Church
 Christ Presbyterian Church
 Closer to God Evangelical Presbyterian Church

Common Grace Presbyterian Church
 Covenant Presbyterian Church (The Barn)
 Deerfield Presbyterian Church
 Dundalk Presbyterian Church
 Evangelical Presbyterian Church of Milford
 Evangelical Presbyterian Church of Westtown
 Fairview Evangelical Presbyterian Church
 Faith Evangelical Presbyterian Church
 Forks of the Brandywine Presbyterian Church
 Fourth Presbyterian Church
 Garwood Church
 Goodwill Church
 Grace Covenant
 Great Valley Presbyterian Church
 Guinston Presbyterian Church
 Harrison Presbyterian Church EPC
 Huntingdon Valley Presbyterian Church
 Langhorne Presbyterian Church
 Little Britain Presbyterian Church

Living Hope Evangelical Presbyterian Church
 Living Word Reformed EPC
 Manoa Community Church
 Middle Smithfield Presbyterian Church
 North Point Evangelical Presbyterian Church
 Orchard Christian Fellowship
 Oreland Evangelical Presbyterian Church
 Presbyterian Church of Kennett Square
 Princetown Evangelical Presbyterian Church
 Reston Presbyterian Church
 Resurrection Clinton Hill
 Resurrection Williamsburg (Christ the King)
 Round Hill Presbyterian Church
 Silver Lake Christian Community Church
 The Church at Ridgebury
 The Elm Church
 Twin Tiers Evangelical Presbyterian Church
 Union Presbyterian Church
 Upper Octorara Presbyterian Church

JOIN US IN MISSION AND MINISTRY

GIVE

1

Donate online
 or by mail
 Matching gifts
 Grants



SERVE

2

Volunteer
 Intern
 Join our blog team
 Join our board of directors

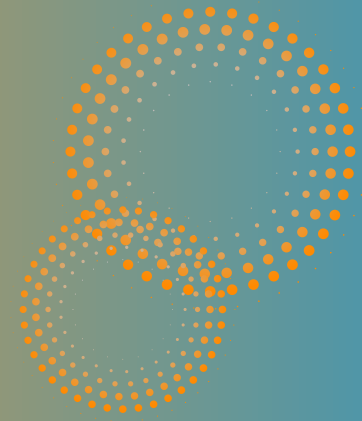
CONNECT

3

Participate in our events
 Sign up to receive emails
 Follow us on social media

STUDY WITH FRIENDS

PO BOX 1421
MORRISVILLE, PA 19067-9998



CONNECT WITH US

STUDYWITHFRIENDS.ORG

 STUDY WITH FRIENDS

 @STUDYWITHFRIENDS

 @STUDY-WITH-FRIENDS

 STUDY WITH FRIENDS MINISTRIES

 @STUDYWFRIENDS

THANK YOU!